

Excellent pressing and dotting mechanism ensure accurate measuring result for each lens.



SUPORE BRILLIANT

The range of measurement

LM-700

Sphere: 0m-1to±25m-1

Cylinder: 0m-1to±10.00m-1

Astigmatism: 0° to 180°

ADD: 0m-1 to±10.00m-1

Prism basal Angle measurement rang

0° to 360°

Prism: Horizontal 10cm/m, Vertical 15cm/m

The accuracy of measurement

Dioptric: (0.01/0.12/0.25) m-1

Prism: (0.01/0.12/0.25) cm/m

Mode of measurement

Cylinder: +, ±, -

Prism: X-Y, P-B

Speed of measurement: 0.2 second

Diameter of measurable lens: 18 to 110mm

Other parameters

Weight: About 5.1kg

Power supply: AC 220V 50Hz

Supore

SUPORE BRILLIANT

LM-700 AUTO LENS METER



Supore

Company: Shanghai Supore instruments Co.,Ltd.
Add:No.800 Yeji RD Shanghai China

Tel: 021-36160506-882
Fax:021-36162809

Email:sale99@supore.com
www.supore.com

LM-700

AUTO LENS METER

Concise and compact design saves installation space.

Tilting screen is convenient for users to observe.

Intuitive, simple and clear interface makes operation more easier.



BRILLIANT series

AUTO LENS METER LM-700

Product features



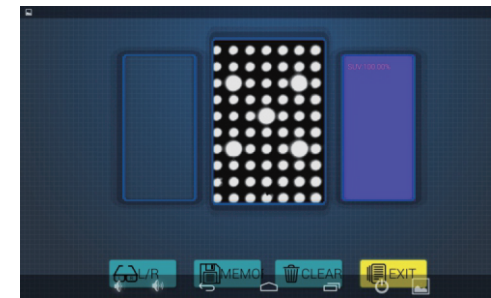
Measuring single/binocular and progressive multi-focal lenses with ease and rapidity.



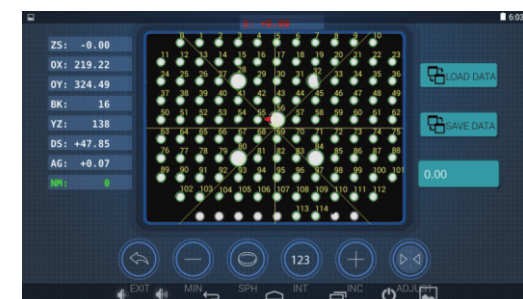
Simple user operating interface.



LCD liquid-crystal display



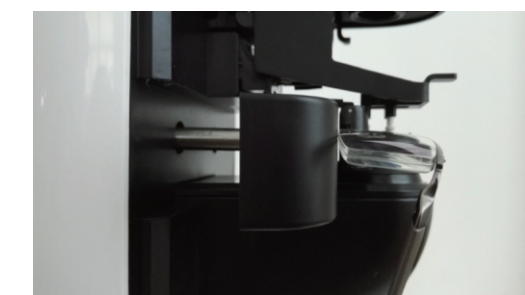
Provide more accurate UV measuring system.



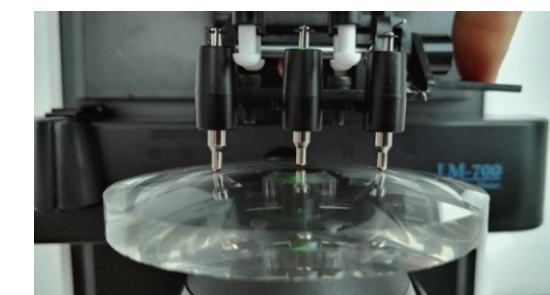
Hartmann principle is more accurate for measurement.



QR Code Printing



Electronic PD Ruler



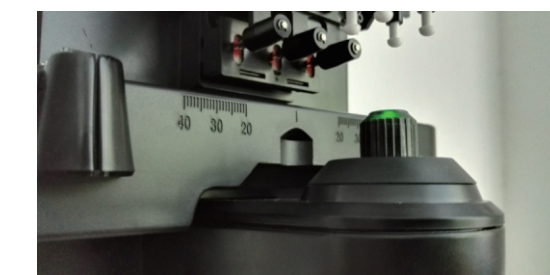
Strengthening dotting device



It is convenient to replace paper with integration printer.



Green light measurement without compensation of Abbe



Automatic R/L eye recognition